



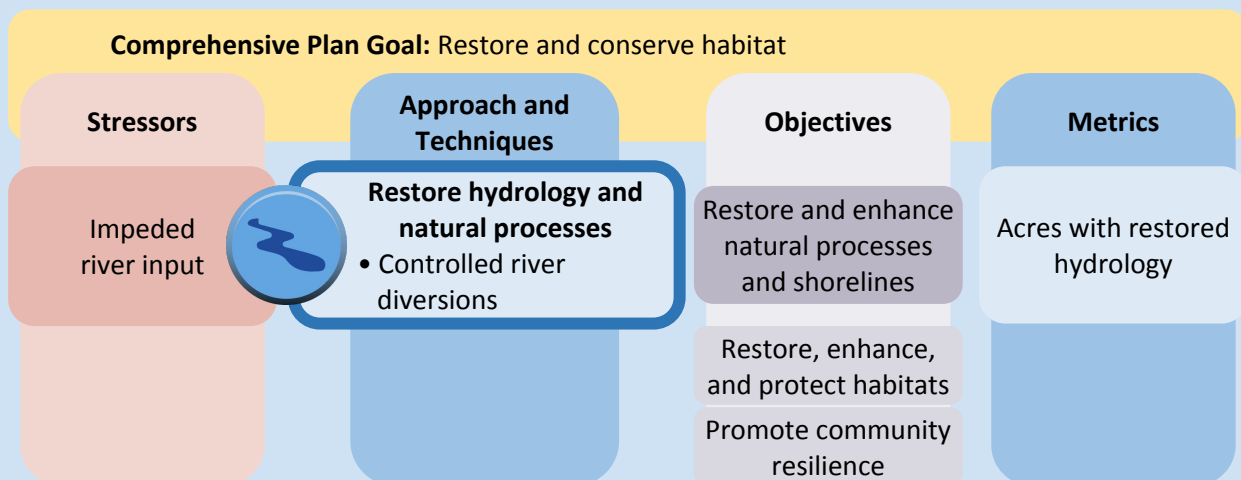
River Reintroduction into Maurepas Swamp, Louisiana

The Gulf Coast Ecosystem Restoration Council (Council) proposes the River Reintroduction into Maurepas Swamp project as a priority for potential funding Funded Priorities List (FPL) Category 2, with \$130 M budgeted for implementation of this project, pending a future Council vote. This project would restore processes to enhance ecosystem health and reduce or minimize future loss of approximately 45,000 acres of baldcypress-water tupelo forest in coastal Louisiana by reintroducing Mississippi River water into the Maurepas Swamp. Louisiana is the sponsor of this proposed project. This river reintroduction project, also known as a river “diversion”, involves an intake and control structure on the Mississippi River, a channel to convey the river water to the swamp, and “guide levees” along the channel to ensure the water gets to the intended location and to prevent flooding.

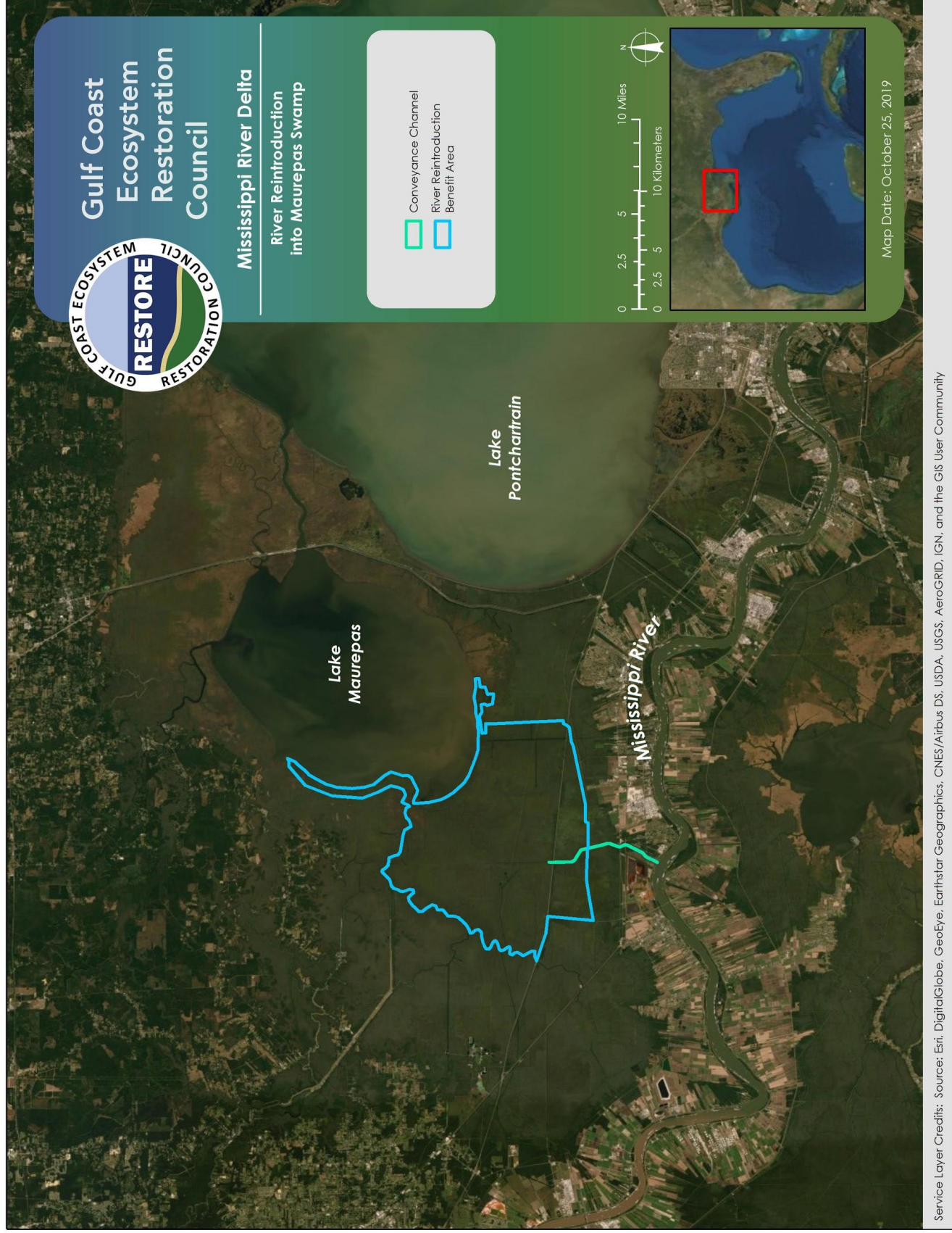
Congress recently approved emergency appropriations for a U.S. Army Corps of Engineers (USACE) hurricane risk reduction levee in the vicinity of this proposed restoration project. This levee, called West Shore Lake Pontchartrain Hurricane and Storm Damage Reduction Project (WSLP), overlaps with a portion of the guide levees for the Maurepas project. Near-term Council action could facilitate this large-scale Gulf coast ecosystem restoration project and improve community resilience. There is the potential to save money by consolidating the engineering, design, and construction of the overlapping portions of the two projects.

Comprehensive Plan Goal: Restore and Conserve Habitat

This proposed project applies Planning Framework approaches and techniques to support Comprehensive Plan goals and objectives. The controlled river diversion technique will address impeded river input into Maurepas Swamp, supporting the primary objective to restore and enhance natural processes and shorelines. Success in meeting this objective may be tracked using acres with restored hydrology as a metric.



River Reintroduction into Maurepas Swamp, Louisiana



Area map of the River Reintroduction into Maurepas Swamp project. The green line from the Mississippi River into Maurepas Swamp depicts the conveyance channel. The area outline depicts the anticipated benefit area.